

681/683

SIDE-FOLDING SECURITY GRILLES



SECURITY GRILLE SYSTEMS



**AIR CIRCULATION.
LIGHT INFILTRATION.
VISUAL ACCESS.
SECURITY.**



INDUSTRY LEADING
COMMERCIAL & INDUSTRIAL SOLUTIONS



Cover image:

Model 683, standard body brick pattern, clear anodized aluminum;
Installation and Service: Overhead Door Company of Madison

Image above:

Model 681, wide body brick pattern, clear anodized aluminum

Standard features at a glance

Operation	Manual unless size requires chain hoist
Curtain	
Frame	Truss-like aluminum top and bottom plates; 1/8" (3 mm) thick
Panel width	7" (178 mm) standard body; 11 1/4" (286 mm) wide body
Finish	Aluminum clear anodized
Track	
Trolley assembly	1 1/8" (29 mm) Height: 1 5/8" (41 mm) Width: 1 3/8" (35 mm)
Track detail	Top-mounted, heavy-duty aluminum sections Height: 1 5/8" (41 mm) Width: 1 3/8" (35 mm)
Curves	- 90°: Standard body: 10" (254 mm) and 14" (356 mm) radius; Wide body: 22" (559 mm) radius 120°, 135° and 150°;
Radius	Standard body: 10" (254 mm) radius 14" (356 mm) standard body 22" (559 mm) wide body
Post types	
Lead post	Hook lock and wall channel; bi-part; top and bottom shoot bolts
Intermediate post	Bottom shoot bolt
Trailing end post	Traveling; fixed; hook lock and wall jamb; top and bottom shoot bolts; carrier
Locking mechanisms	
Lead post	Concealed cylinder-operated hook lock accessible from interior and exterior
Intermediate post	Concealed cylinder-operated shoot bolt accessible from one side only
Trailing end post	Attached 10' max. (3048 mm) protection plate self-locking into a steel V-Stop
Warranty	24 month OEM limited

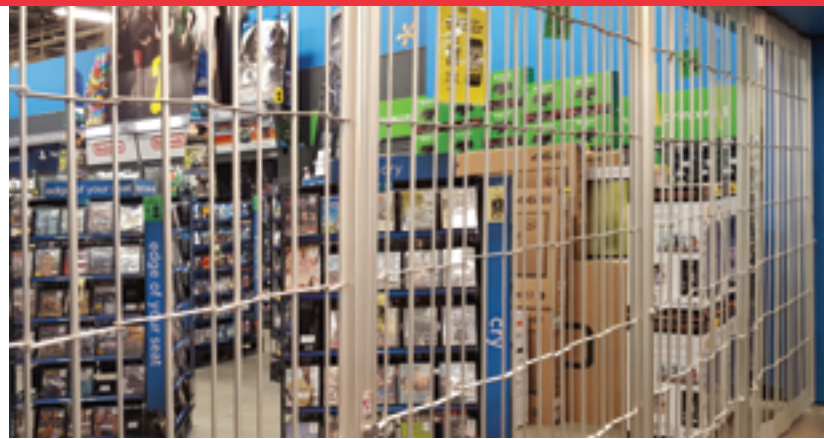
Options

- Thumb-turn guards and protection bars
- Vertical adjustment upward or downward
- Emergency Egress Door
- Custom radii and curves



Grilles that breathe with style

When security is a priority, but you want to maximize air circulation, light infiltration and visual access to interior spaces, models 681 and 683 are an ideal choice. Short on the space required for installation, but long on handsome good looks, these grilles secure premises and guard against theft and debris with superior compactness and nearly endless design possibilities.



Model 683, standard body straight pattern, clear anodized finish

Grille patterns

Model 681 wide body

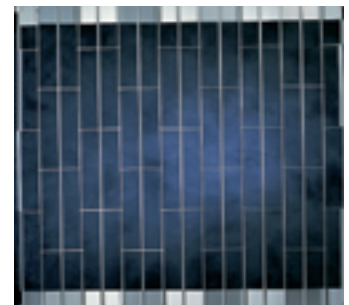
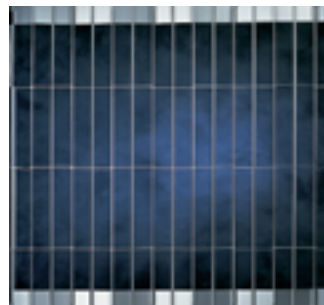
Model 683 standard body

Straight pattern

Brick pattern

Straight pattern

Brick pattern



Benefits

Superior compactness

These side-folding, open-air grilles are ideal for spaces with limited headroom and sideroom. A low-profile, top-mounted track reduces headroom requirements to 1 5/8" (41 mm) and depth requirements to 1 3/8" (35 mm). Panels fold to an average 2" (51 mm) per linear foot on standard-width curtains. Wide-body curtains require an average of only 1 1/2" (38 mm) per linear foot. Minimum clear pocket widths of 8" (203 mm) on standard width grilles and 13" on wide-body models require significantly less depth. All-in-all, these grilles are the shortest-stacking, lowest-profile grilles money can buy.

Well engineered, well built

Quality engineering afford you superior design flexibility and ensure long-lasting looks and performance. Modular construction allows the grille to fit any opening width. Up to 2" (51 mm) of vertical adjustment allows field correction of uneven surfaces. Standard width and wide-body panels offers alternative stacking pocket depths.



Model 683, standard body brick pattern, clear anodized aluminum

The original, innovative choice for unequalled quality and service.

Overhead Door Corporation pioneered the upward-acting door industry, inventing the first upward-acting door in 1921 and the first electric door operator in 1926. Today, we continue to be the industry leader through the strength of our product innovation, superior craftsmanship and outstanding customer support, underscoring a legacy of quality, expertise and integrity. That's why design and construction professionals specify Overhead Door Corporation products more often than any other brand. Our family of over 400 Overhead Door Distributors across the U.S. and Canada not only share our name and logo, but also our commitment to excellence.



INDUSTRY LEADING
COMMERCIAL & INDUSTRIAL SOLUTIONS
Overhead Door Company of The Meadowlands & NYC



www.overhead-doors.com | Tel. 973-471-4060 | info@dockndoor.com

©2017 Overhead Door Corporation. The Ribbon logo is a registered trademark of Overhead Door Corporation. All other trademarks are property of their rightful owners. Consistent with our policy of continuing product improvement, we reserve the right to change product specifications without notice or obligation. C900-078 2.5M 03/17 JAR